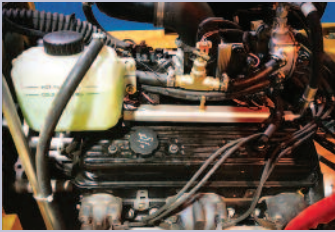
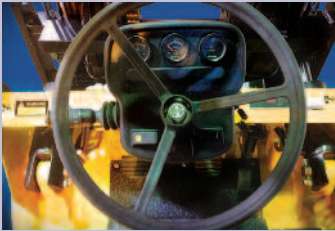




Operator's Compartment:
Built for comfort and productivity. Generous head, arm and leg room. Easy on/off step-up frame. Gramer full suspension, fully adjustable, deluxe driver's seat.



Engine:
GM low emission propane Vortec engines. Optional Clean Burn Cummins Turbo Diesel engines.



Steer Column:
Self contained, fully adjustable, tilt and telescopic steer column.



LOWRY'S:
Unique super "Clear View" mast combines excellent visibility with exceptional strength for safety and high productivity.

The Lowry XD-Series is everything you need in a heavy capacity industrial lift truck. A seven model range provides lift capacities from eight to 18 tonnes all in an industry leading compact size of only 1,42 metres wide.

Powered by propane or diesel, each LOWRY is manufactured with high quality components and features a unique two or three stage 'clear view' mast, designed to allow excellent operator visibility.

Features include:

- Models ranging from 8,000-18,000kg
- Compact size
- Unique super "Clear View" 2 or 3 stage mast for excellent visibility
- 3-speed power shift transmission
- Ergonomically designed controls
- Comfortable and functional cab
- GM 5.7 litre Vortec V8 or Cummins 4.5 turbo engine (propane/diesel)
- Tyres 28 x 14 x 22 inch on 180XDS-220XDS models

EXCLUSIVELY FROM

POOLER
LMT LOAD MOVING
TECHNOLOGY
